



The benefits of waterless Ökonal®



- No odor formation
- No incrustation
- No repair costs for flushing devices
- No flushing, therefore minimized fresh water or wastewater costs
- No waste of valuable drinking water
- No electrical connection
- No repair costs for electronic components
- Unique double-flyp membrane siphon (pat. pend.)
- Special ceramic surface and unique special cleaner
- Easy to clean
- Easy maintenance (simple siphon cartridge replacement)
- More than 60 years of practical experience in Germany
- Proven longevity, references are available on request

 **CleanPlus** Finish

DOUBLE-FLAP MEMBRANE SIPHON:

Integrated hygiene capsule ensures perfect hygienic conditions in the siphon

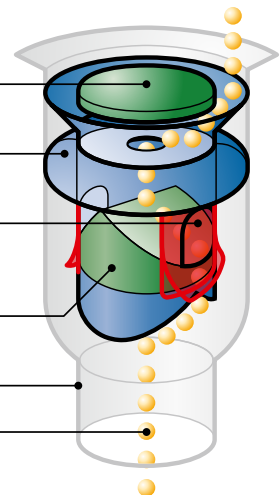
Easy-to-replace **siphon cartridge** with a sophisticated sealing system

Reliable odor membrane, automatically seals against sewer odors. Safe under positive and negative pressure. No cloggingg due to double-flap technology

Sediment inhibitor, minimizes sediment deposits in the drain pipe

Drain pipe

The unique double-flap membrane technology ensures **instantaneous drainage** of urine without leaving any residue

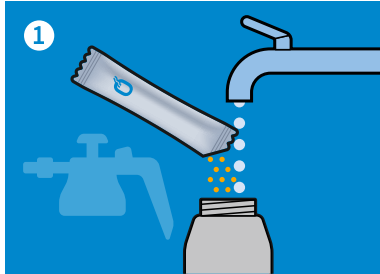


Ökonal, the "ecological urinal"

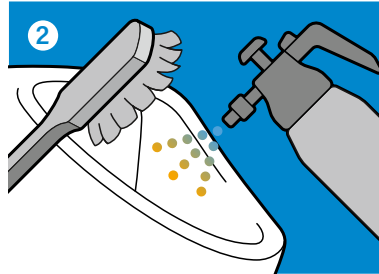
*In German, the adjective "ökologisch" (ecological) denotes, in addition to its scientific meaning, an attitude or behavior that handles environmental resources carefully. Short form and colloquial: "öko".
Urinal: A plumbing fixture intended for standing urination, typically by men and boys (pissoir).*



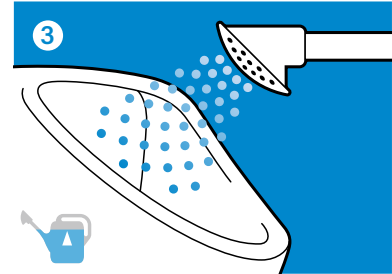
Easy cleaning



1 Dissolve the contents of the sachet in 1 l of water. Shake the spray bottle at least 10 times

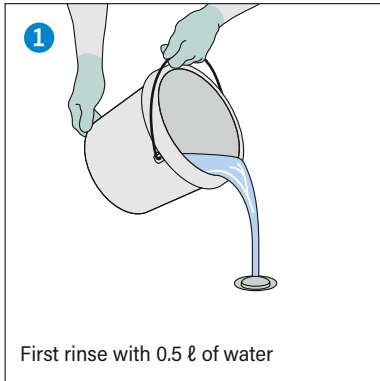


2 Spray urinal with mixture, then brush

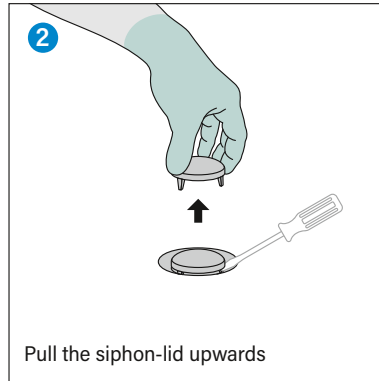


3 Rinse with cold water (at least 5 l)

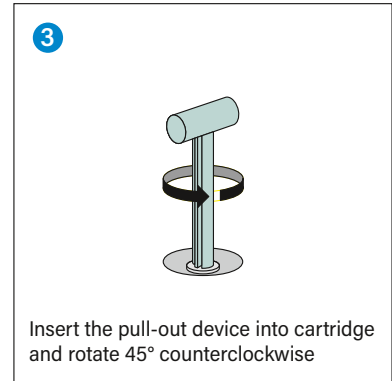
Easy cartridge replacement



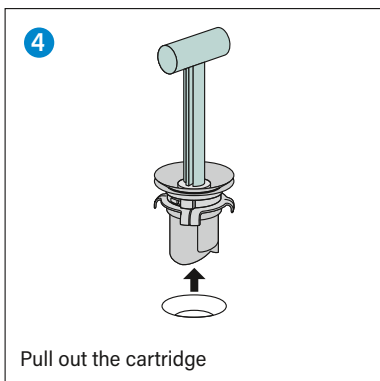
1 First rinse with 0.5 l of water



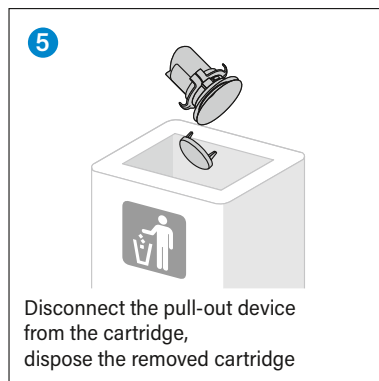
2 Pull the siphon-lid upwards



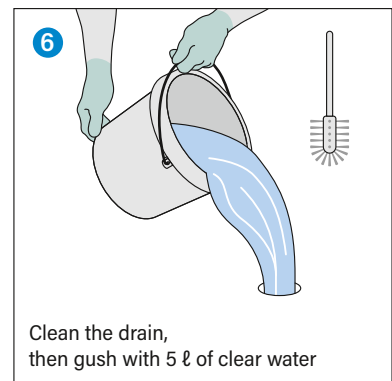
3 Insert the pull-out device into cartridge and rotate 45° counterclockwise



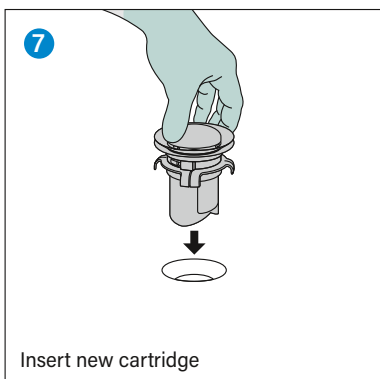
4 Pull out the cartridge



5 Disconnect the pull-out device from the cartridge, dispose the removed cartridge



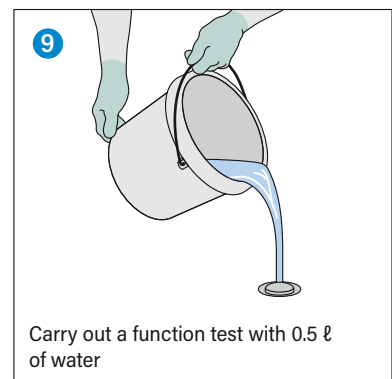
6 Clean the drain, then gush with 5 l of clear water



7 Insert new cartridge



8 Push down as far as it will go



9 Carry out a function test with 0.5 l of water